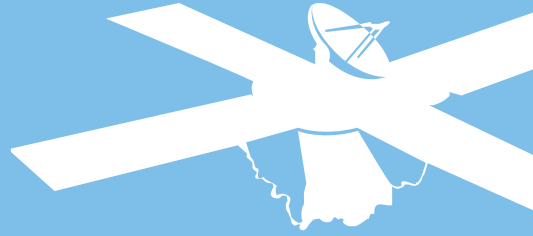


# Cost effective real time asset location



## fonetrack GPS™

**Ideal for businesses that operate time-critical services such as rapid response repairs, delivery, field maintenance, or any organisation that has groups of workers that operate away from base.**

**This service enhances your ability to monitor and deploy assets and resources to optimum effect, increasing your productivity, saving you money and improving customer satisfaction.**

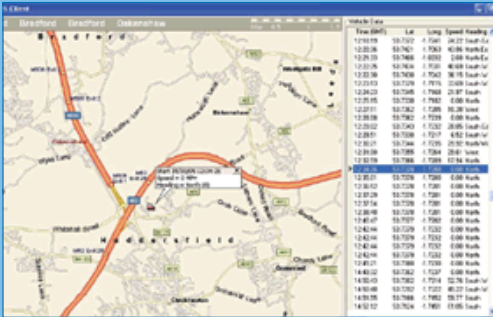
Justfone was the first company to develop a tracking solution using the mobile phone system, and responded to customer demand by adding a GPS (Global Positioning System) enhancement to its services.

GPS-enhanced Fonetrack™ is served from the same location platform but will give you more frequent and more accurate location updates than standard Fonetrack™. So, if you need to know the location of any asset to within 10 metres every few minutes, then **GPS-enhanced Fonetrack™** is for you.

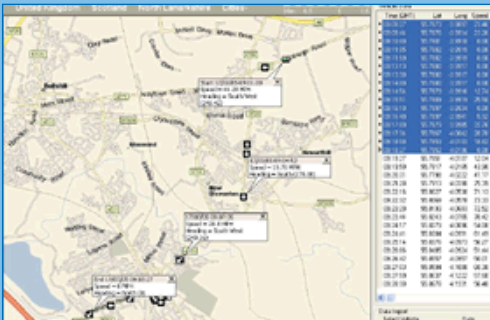
**GPS-enhanced Fonetrack™ - Just some of the benefits:**

- **GPS Location fixes including**
  - time, date, heading and speed
  
- **Live, real-time updates e.g.**
  - every 2 minutes
  
- **Instant overview of a whole**
  - fleet or single vehicle
  
- **Notification of Geo-fence**
  - boundary crossings
  
- **Frequent, accurate location**
  - reporting allows you to verify
  - working times, travelling times
  - and distances travelled
  
- **Data can also be visible to**
  - multiple users over a simple
  - and secure **WEB** interface
  
- **Easy installation**
  
- **Also fully integrated with GPS,**
  - A-GPS or Bluetooth GPS**
  - enabled handsets

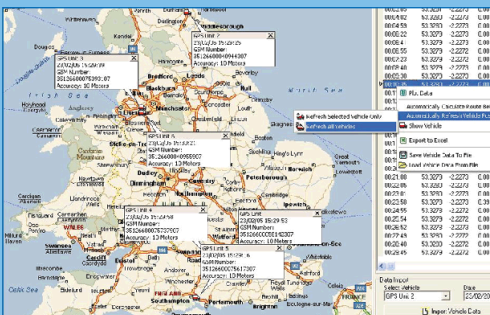
# fonetrack GPS™



1. High Accuracy - Real-Time Location of Vehicle



2. Journey "Snail-Trial" (Close-Up)



3. Multiple Vehicle Positioning with Automatic Data/Position Refresh

Journey Report						
Report Generated: 23/05/05 08:00:31						
Journey Report for GPS Unit 3						
Journey Date: 22 Feb 2005						
Event	Start Time	End Time	Speed	Latitude	Longitude	Occupancy
Arrive Start	00:13:00	00:13:00	0	53.42360	-2.91706	Participate
Excursion Idle	00:13:44	00:14:20	0	53.42336	-2.91506	Excursion Idle - 00:13:45
Excursion Idle	00:15:02	00:15:00	0	53.42322	-2.91500	Excursion Idle - 00:15:00
Excursion Idle	00:24:43	00:26:20	0	53.42375	-2.91818	Excursion Idle - 00:19:40
Excursion Idle	00:28:07	00:29:00	0	53.42366	-2.91824	Excursion Idle - 00:23:23
Excursion Idle	00:29:07	00:29:20	0	53.42362	-2.91796	Excursion Idle - 00:17:47
Excursion Idle	00:29:27	00:29:23	0	53.42329	-2.91706	Excursion Idle - 00:12:05
Excursion Idle	00:13:00	00:18:12	0	53.42343	-2.91536	Excursion Idle - 00:09:14
Excursion Idle	00:20:53	00:20:00	0	53.42071	-2.91714	Excursion Idle - 00:09:02
Excursion Idle	00:05:14	00:05:00	0	53.42330	-2.91825	Excursion Idle - 00:05:00
Excursion Idle	00:05:10	00:05:00	0	53.42302	-2.91807	Excursion Idle - 00:03:00
Excursion Idle	00:03:46	00:03:41	0	53.42309	-2.91810	Excursion Idle - 00:03:46
Excursion Idle	00:22:02	00:18:42	0	53.42343	-2.91424	Excursion Idle - 00:19:40
Stopping	00:24:43	00:24:43	25.14	53.42343	-2.91424	Stopping - 25.14 mph
Stopping	00:13:00	00:13:00	24.37	53.42332	-2.91706	Stopping - 24.37 mph
Stopping	00:24:43	00:24:43	25.14	53.42343	-2.91424	Stopping - 25.14 mph

4. Standard Report Format

The data from vehicles or field-based assets is collated, managed and served from the Fonetrack™ location platform.

- GPS Positioning with time, date, heading and speed
- WEB browser interface for quick, simple access
- Windows based Client
  - Application with many standard features, e.g. vehicle location, journey "snail trail", multiple vehicle viewing, auto-refresh of whole fleet or individual vehicle position
- Standard journey reports
  - including; speed, time, idle/stop time, and point-to-point journey distance calculation

For a demonstration contact:

Justfone Ltd.  
 08707 70 69 68  
 info@justfone.com  
 www.justfone.com